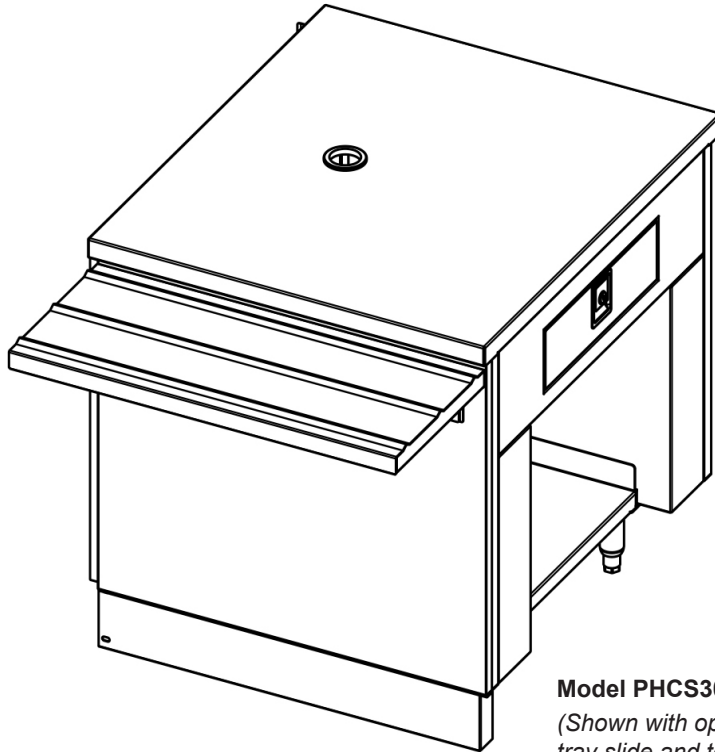


# palmer HAMILTON

## MODULAR CASHIER COUNTER



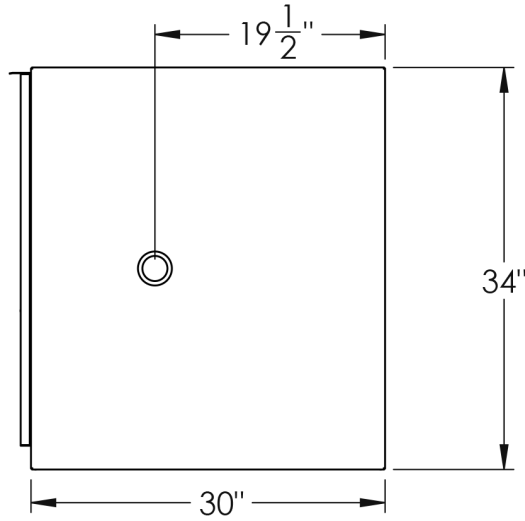
**Model PHCS30**  
*(Shown with optional  
tray slide and toe plate)*

### DESIGN FEATURES

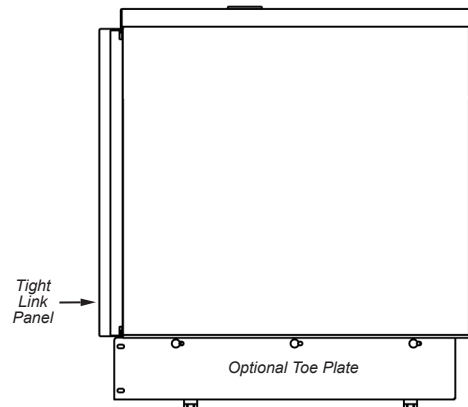
- Durable, welded 300 series stainless steel square tubular frame
- Optional patented TIGHT LINK™ interlocking mechanism available to eliminate vertical and horizontal gaps between counters
- Counter tops in 14-gauge stainless steel, solid surface, or quartz
- Base exteriors in stainless steel or decorative laminate
- Grommeted top cord passage
- Locking cash drawer with removable compartment tray
- Duplex 120VAC receptacle and empty data box
- 8' power cord
- 6" high stainless steel adjustable legs or 5" swivel casters
- UL listed, electrical and sanitation
- Made in U.S.A.



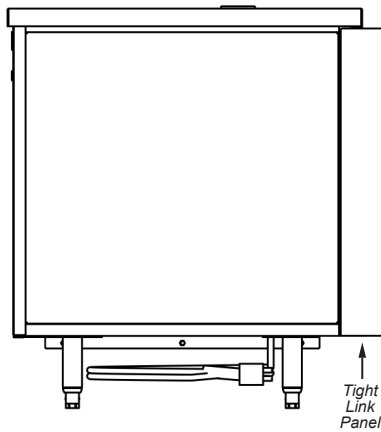
# MODULAR CASHIER STATION



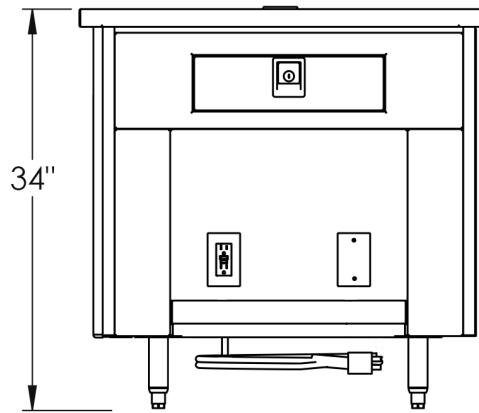
Plan View ▲



Front View ▲



Operator View ▲



End View ▲

Model PHCS30

## Build Your Counter

### 1 Base Length

Base Length	Model	Base Length	Model
<input type="checkbox"/> 28"	PHCS28	<input type="checkbox"/> 42"	PHCS42
<input type="checkbox"/> 30"	PHCS30	<input type="checkbox"/> 54"	PHCS54

### 2 Base Panel

- Stainless steel    Laminate

### 3 Base Options

- Stainless steel toe plate  
 TIGHT LINK™ interlocking mechanism

### Base Options (continued)

- Custom vinyl graphic  
 5" swivel casters    6" legs  
 2nd cash drawer (PHCS-54)

### 4 Counter Top Material

- 14-gauge stainless    Corian® solid surface  
 Zodiaq® quartz

### 5 Tray Slide

- Left    Right    End  
 Flat stainless steel    V-ridge stainless steel  
 Corian solid surface    Zodiaq quartz

palmer HAMILTON

143 S. Jackson Street, Suite 1 • Elkhorn, WI 53121  
 Phone: 800-788-1028 • 262-723-8200 Fax: 262-723-5180 • www.palmerhamilton.com



Made In U.S.A.