

CABINETS

CONDIMENT/CASHIER

Condiment/cashier cabinets sturdy panel construction built to last.



CRS18



CS18-42



CS18-4208

Customize your graphics!

Laminates:
Silver Eucalyptus Y0668
Ebony Charcoal 8205k-16
Red D12_6

POLY II LOCKING CASTER WHEELS provide excellent floor protection, abrasion resistance, high impact strength, and easy, quiet operation. They are non-marking and resistant to water, oil and most chemicals. Cabinets and liners move with little effort on these long-lasting casters. Front cabinet casters lock for secure placement.

STURDY PANEL CONSTRUCTION The side, back, top and door panels are 3/4" core laminated on both sides. Tops are constructed of 3/4" core laminated on top and backed with our standard phenolic backer. Durable for many years of use.

PANEL SUPPORT Flanged L brackets are 2"x 2"x 12 gauge steel.

INDUSTRIAL STRENGTH HARDWARE European style steel concealed hinges attaches door to cabinets. A neodymium cup magnet is used to keep doors securely closed, yet release and open smoothly.

KEYED STORAGE Lockable cabinet provides secure storage for supplies.

STANDARD DESIGN SELECTIONS examples to right. (Note: Upcharge if other options requested)

CUSTOMIZED GRAPHICS Customize your cabinets with no minimum quantity requirements.

EdgeGuard™ with 3/4" M3 particle board.

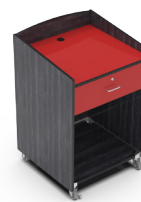


Poly II locking caster wheels

STANDARD DESIGN SELECTIONS:



Option #1
• One laminate all sides/top



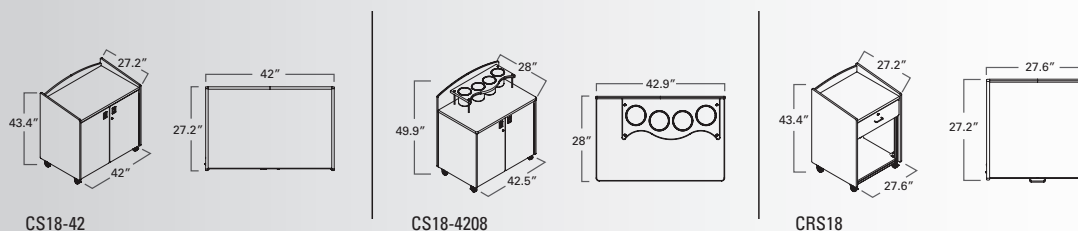
Option #2
• Laminate 1 - three sides
• Laminate 2 - front/top



Option #3
• Laminate 1 - three sides
• Laminate 2 - top
• Logo laminate or a third laminate color on the front.

Made in the USA

condiment/cashier cabinets quick specs



Associations and Purchasing Groups:



palmerHAMILTON

143 S. Jackson Street
Elkhorn, WI 53121-1911

Toll Free: 800-788-1028
Local: 262-723-8200
Fax: 262-723-5180

www.PalmerHamilton.com

To see the complete family of Palmer Hamilton products please see www.palmerhamilton.com