



Metal framed indoor/outdoor seating

Basic Chair Pricing



CODE	DESCRIPTION	STANDARD HEIGHT / NONSTACKING (SN)	STANDARD HEIGHT / STACKING (SS)	PUB HEIGHT (PH)	FIXED POST	
					STANDARD HEIGHT (FIXSH)	PUB HEIGHT (FIXPH)
A	Metal Arch Back	\$320	N/A	\$390	\$547	\$721
L	Metal Ladder Back	\$320	\$320	\$390	\$547	\$721
P	Metal Perforated Back	\$320	\$320	\$390	\$547	\$721
SO	Solid Wood Back	\$347	\$347	\$401	\$604	\$778
SL	Wood Back Slots	\$347	\$347	\$401	\$604	\$778
APL	Wood Back Apple	\$347	\$347	\$401	\$604	\$778
J	Metal Jailhouse Back	\$320	\$320	\$390	\$547	\$721
C	Metal Cross Back	\$320	\$320	\$390	\$547	\$721
S	Solid Metal Back	\$320	\$320	\$390	\$547	\$721
SQ	Wood Back Squares	\$347	\$347	\$401	\$604	\$778
CI	Wood Back Circle	\$347	\$347	\$401	\$604	\$778
BS	Button Seat (fixed)	\$276	\$454			

See our brochure for back descriptions.
See next page for seat options.



Standard height
Non-stacking

SN



Standard height
Stacking

SS



Pub
height

PH



Fixed Standard height
(with or without back)

FIXSH

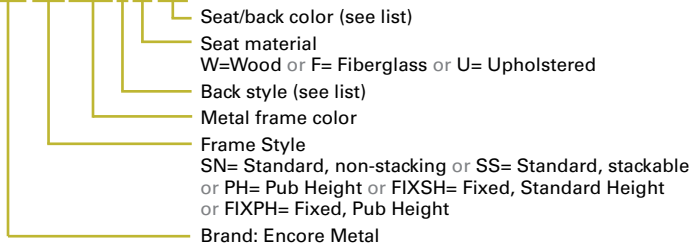


Fixed Pub height
(with or without back)

FIXPH

Part Number Explanation:

EMSSP13LWS3



Paint
(Interior)



P8 Anodized Nickel



P9 Bronze



P10 Dark Sienna



P11 Pewter



P12 Sandtex Black



P13 Sparkle Silver

Interior/Exterior



P1 Red / RAL3020



P2 Yellow / RAL1018



P3 Blue / RAL5005



P4 Green / RAL6001



P5 Orange / RAL2004









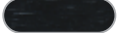



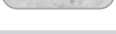


P6 Light Green / RAL6027



Metal framed indoor/outdoor seating

Seat Options

Wood			Fiberglass			Upholstery		
CODE	DESCRIPTION	ADDER	CODE	DESCRIPTION	ADDER	CODE	DESCRIPTION	ADDER
 S1	Natural	\$72	 9553	Steel Gray	\$302	G2	G2-Grade 2	\$118
 S2	Cherry	\$72	 9581	Cappuccino	\$302	G3	G3-Grade 3	\$137
 S3	Walnut	\$72	 9577	Fleckstone	\$302	G4	G4-Grade 4	\$144
 S4	Mahogany	\$72	 9569	Lapis	\$302	G5	G5-Grade 5	\$173
 S5	Solid Black	\$72	 9555	Obsidian	\$302	G6	G6-Grade 6	\$199
			 6329	Graphite	\$302	Go to palmerhamilton.com/resources/fabrics for guide.		
			 6328	Ruby	\$302			
			 9676	Dusk	\$302			

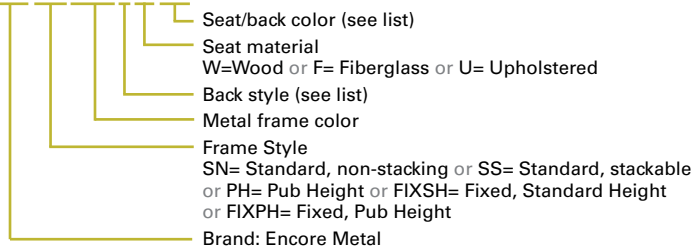
See brochure for larger color swatches.

Encore Chair Cart

PART NO.	DESCRIPTION	# OF CHAIRS (Standard & Pub)	USE W/ STAIRS	LIST
SCD2	4 Caster Cart	6	NO	\$299
SCC600P	Stacks two sets, side by side	12	NO	\$859
SCC630P	Stacks three sets, side by side	18	NO	\$934

Part Number Explanation:

EMSSP13LWS3



Associations and Purchasing Groups:

See our website for our full list of regional and state contracts.

