

JACKSON

Sturdy chairs and stools with an elegant industrial design and sturdy feel, with dining, counter and bar heights. Four frame finishes and four stain colors.



CONSTRUCTION

Chairs

- 3/4" square steel tube powder coated frame
- Stained, solid ash wood back and seat
- Black, non-marring butyrate glides

Stools

- Metal tapered powder coated frame
- Stained, solid ash wood seat
- Sturdy metal glides

WEIGHT CAPACITY

275 lb

SHIPPING

All models ship fully assembled, side chairs two per carton, all other items singly.

WARRANTY

5 year standard warranty. See our website.

COLORS/FINISHES

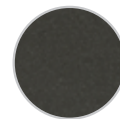
Frame Finishes



Sparkle Silver
SS



Silver Bullet
SB



Pewter
PW



Sandtex Black
BL

Seat/Back Stain Finishes



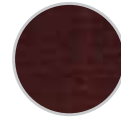
Black
ST06



Clear
ST16



Walnut
ST08



Mahogany
ST19

Rigid steel frames with hardwood seats and backs



MODEL NUMBER	DESCRIPTION	OVERALL HEIGHT (in)	SEAT HEIGHT (in)	WIDTH (in)	DEPTH (in)	WEIGHT (lb)	SEAT DEPTH (in)	SHIPPING DIMS W x D x H (in)	SHIPPING WEIGHT (lb)
JACKSON-SC	Side Chair	33	18	17	19	25	16	24.75 x 17.5 x 38.625	56
JACKSON-CS	Counter Chair	37	24	17	20	27	16	23.5 x 18.5 x 44.75	30
JACKSON-BS	Bar Chair	43	30	17	20	28	16	23.5 x 18.5 x 44.75	31
JACKSON-S18	Stool	18	18	15-1/4	15-1/4	16	12 x 12	19 x 19 x 31	19
JACKSON-S24	Stool	24	24	16-3/4	16-3/4	17	12 x 12	19 x 19 x 31	20
JACKSON-S30	Stool	30	30	17-1/2	17-1/2	18	12 x 12	19 x 19 x 31	21

DIMENSIONAL DRAWINGS

