



tables



seating



booths



collaborative

shelving/
circulation



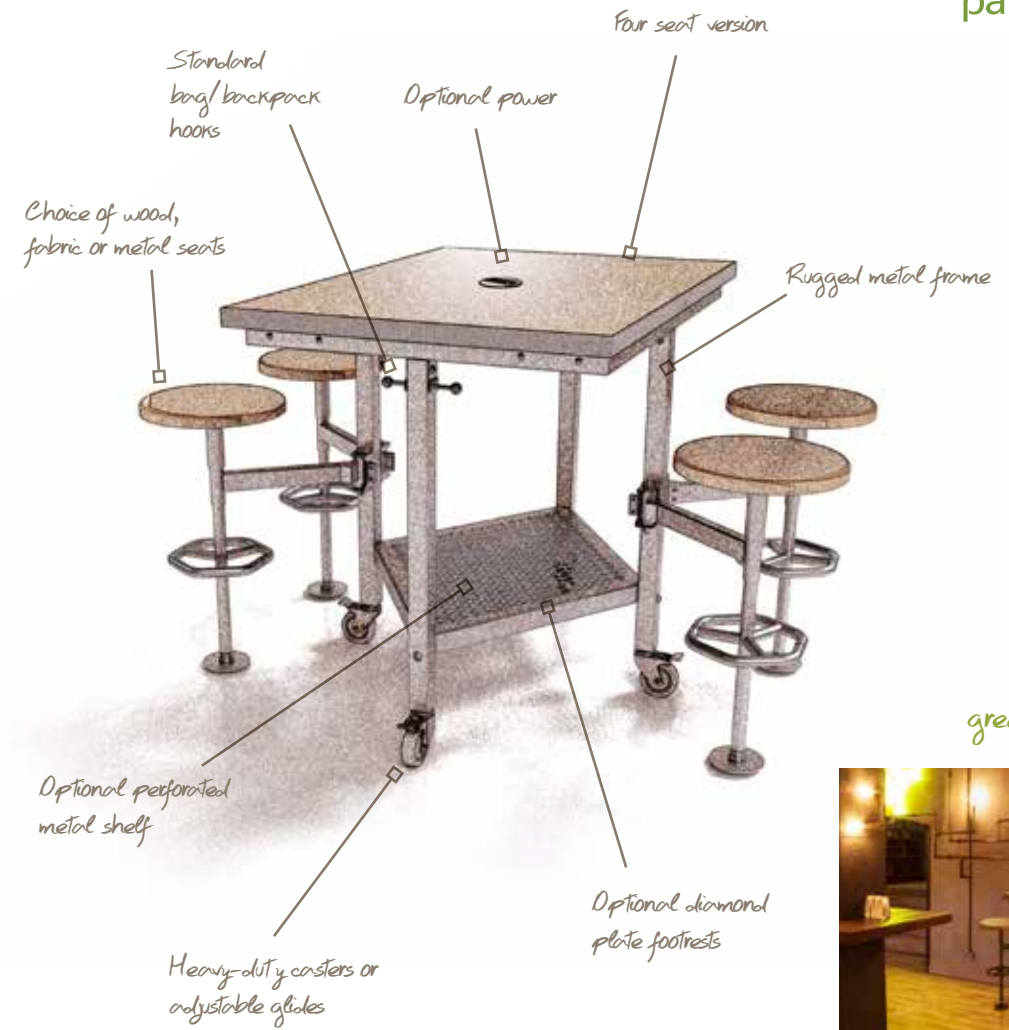
indoor/outdoor



frames/edges
laminates
design

product overview

Seats swing allowing you to work sitting or standing



Two seat version, great for against walls



Standard bag/backpack hooks



Sit or stand, learn, make, collaborate, move!

STYLE AND FUNCTIONALITY is reflected in the Rally™ table. This table features various top styles; laminate, butcher block, no-drip top and epoxy resin to fit your function.

MOVE AS NEEDED TO RECONFIGURE your space or connect tables too!



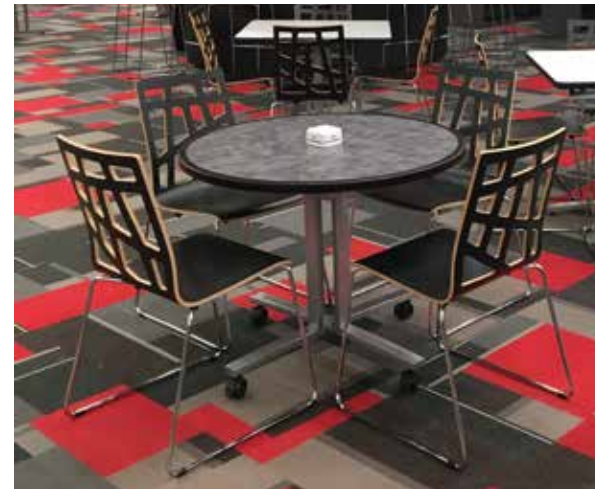
RE-LOAD™ | RE-LOAD™
TRAIN

Mobile USB powered table with no cords!

MOBILE POWER ANYWHERE, ANYTIME for classrooms, common spaces, dining and lounge areas.

CONFIGURE YOUR SPACE IN MANY WAYS for active learning and collaboration in large or small groups while powering devices.

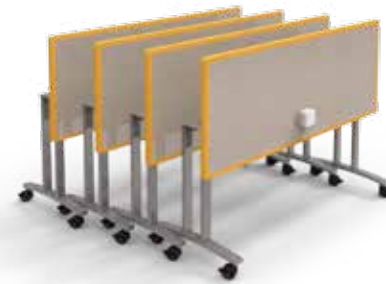
COMPLIMENTS the Story table.



palmerHAMILTON



Untethered Table power for mobile devices



- Untethered Power
- 4 USB ports
- Safe and secure lock access for battery compartment

- SmartEdge technology

BACKPACK HOOKS

Stylish backpack hooks are standard for all pub-height RE-LOAD tables.



SAFE AND SECURE

Only your facility staff has key lock access to the battery compartment.



The RE-LOAD power/recharging unit features one USB port per side (four total). Charge or power any smart phone or tablet. When the battery needs to be exchanged, the glowing blue light becomes a glowing red light signifying it is time to replace the battery with a fresh recharged battery.

- Coffee Table, Standard, Counter and Pub heights
- Caster option
- Tough

STORY

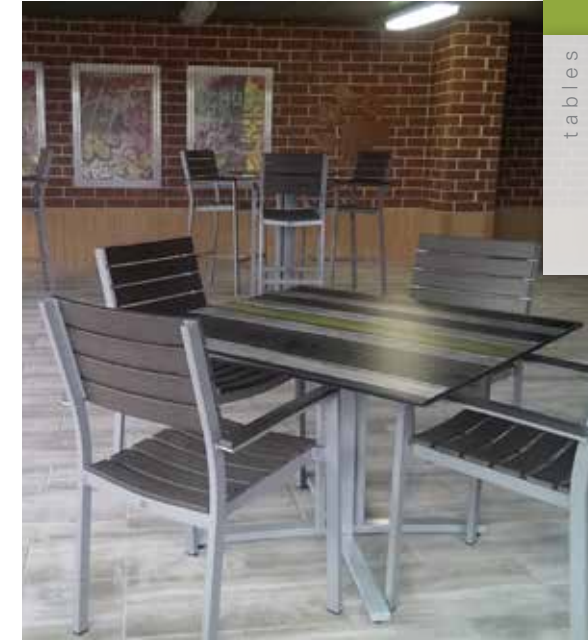
Unique, stylish and available in four heights.

FIRST STORY is coffee table height 16"; second story is standard height at 29"; third story is counter height at 36" and fourth story is pub height at 42".

GLIDES ARE STANDARD with a caster option available.

COMPLIMENTS the RE-LOAD™ charging table.

Bold style!



Standard bag/ backpack hooks



Discovery

Storage right in the table!

TWO HEIGHTS The Discovery table is available in 25" and 30" high with casters.

WHITEBOARD LAMINATE IS STANDARD ON THE STORAGE TOPS. Use storage tops for learning/writing activities. Store the tops on the side of the table when not in use.

COMPLIMENT the Discovery table with the Story table in your space.



Two Heights!

- Two heights
- Caster option
- Storage tops store on legs
- Tough





*Lightweight
proprietary core*



*Lightweight folding
table with power*



The AERO Go version makes the AERO even more mobile, giving almost anyone the ability to easily move the table. Just lift a table end to activate the casters. When the table is in the down position, the casters automatically lock.

aero

Quickly and easily set up and take down.

GREAT FOR A TRAINING, banquet or learning facility.

LIGHTWEIGHT AERO TABLES flip, fold and nest for simple storage.

TOPS FEATURE A SMARTEDGE that is not only rugged, but 60% of the material consists of renewable bio-based resources.



The folding and flip top versions feature a frameless lightweight top. The folding version offers a super durable, easy to operate folding mechanism. All while keeping your options for power in tact.



Lightweight
proprietary core



Room for
additional
columns
on the cart



sync

Quickly change your
space's identity.

SUPER LIGHT, ultra fast Sync table system.

NO TOOLS ARE REQUIRED. Tools are not required to assemble or disassemble.

THE FLEXIBLE SYNC TABLE SYSTEM allows you to assemble up to 20 standard height tables or 20 pub height tables or a combination of both.

TOPS FEATURE A SMARTEGE that is not only rugged, but 60% of the material consists of renewable bio-based resources.

THE TABLETOPS, BASES AND COLUMNS all fit on a heavy-duty cart that fits through standard size doors (32").



- Super lightweight
- Fast – no tools needed
- Portable
- Tough

PHlip™

Mobile, nestable,
flip top.

ENGINEERED FOR STABILITY, even at 42" high.

OPERATES WITH EASE, the top glides down slowly and safely.

STANDARD HEIGHT AND PUB HEIGHT options available.

Flips down
slowly and safely



ALLOY

ALLOY

Tough, affordable yet very cool!

AVAILABLE IN STANDARD HEIGHT AND PUB HEIGHT in a disc base and T-base.

TOPS FEATURE A SMARTEDGE that is not only rugged, but 60% of the material consists of renewable bio-based resources.



Disc and T-base available



The Alloy series tables are available in Disc base and T-base.



palmer HAMILTON

conversation

Stylish, power, built-in modesty and a pub height option.

PERFECT FOR COLLABORATIVE SPACES

A SIMPLE TABLE that stands out to be the center of attention in any setting.

AVAILABLE IN VARIOUS SIZES in standard height and pub height.

BUILT IN POWER CHANNEL is standard.



CONVERSATION



Made in USA

inspiration™

One tough table, with versatile function.

MULTIPLE HEIGHTS The industrial Benchwork table is available in 30", 36" and 42" high with a variety of table top sizes.

VARIOUS TOP OPTIONS that include a butcher block top or laminate tops with EdgeGuard™.

HEAVY-DUTY CASTERS Casters are standard with a glide option available.



Available in 30", 36" and 42" high.



SYNERGY

Designed for two-sided seating making collaboration simple.

MULTIPLE SIZES

- 30, 36, 42" heights
- 24, 30, 42" widths
- 72, 84, 96" lengths

VARIOUS MATERIALS

Standard: Laminate with EdgeGuard® edge option

OPTIONS WITH UPCHARGE:

- Butcher block
- Premium laminates
- PVC edge available.
- Power outlet

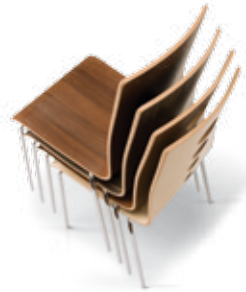
Top and side panels can be customized



Standard glides



Optional heavy-duty casters



Kurpie

Euro-style quality wood dining chairs.

CRAFTED WITH STEAM BENT PLYWOOD, each chair is designed to provide superior ergonomic comfort with waterfall seat edges.

CHOOSE FROM EITHER DURABLE LAMINATE or the elegance of a stained wood finish.



Use a custom laminate to brand your space!



- Tough but lightweight
- Stackable
- Wood or laminate
- European Design
- 4-leg or Sled Base



The **encore** chair cart allows for easy transport and storage of up to four chairs per cart.



The metal framed chairs offer the convenience of stacking or non-stacking. Options include Standard Height and Pub Height.



Customize your wood back chair as an added design element to your space. Custom etching also available. (Call for quote.)



Standard and pub height available



- Indoor/Outdoor
- Stackable
- Numerous styles
- Logo back options

encore metal

Metal framed indoor/outdoor seating with style and function.

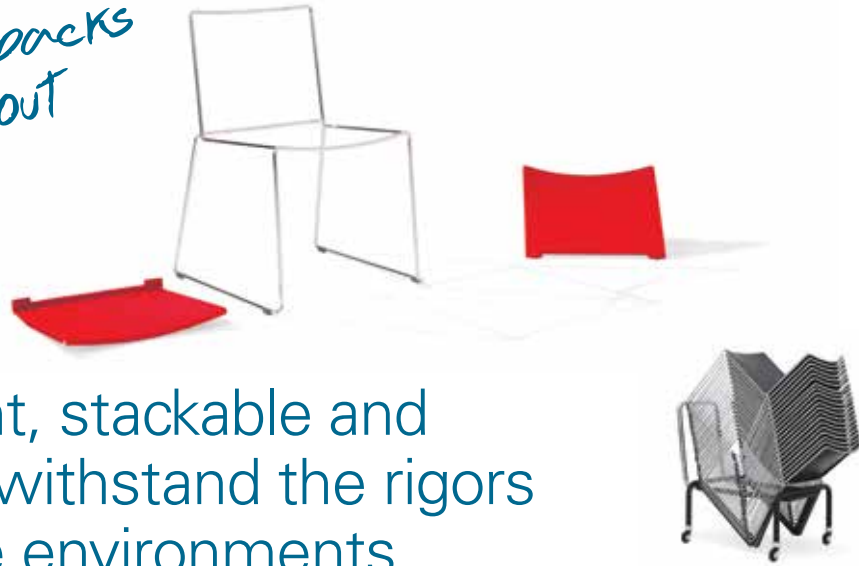
BUILD YOUR OWN CHAIR by choosing from 5 frame styles, 11 back styles, 3 seat options and various colors.

STANDARD HEIGHT and pub height available.

OUTDOOR OPTION AVAILABLE with exterior paint and fiberglass seats.



Seats and backs change out



filo

Lightweight, stackable and durable to withstand the rigors of high-use environments.

FILO FEATURES A RENEWABLE SEAT AND BACK.

EASILY CHANGE OUT THE SEAT AND BACK if you want to change the color.

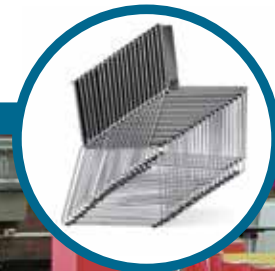
OPTIONS INCLUDE STACKING ARM CHAIR, stacking arm chair with ganging clips, stacking stool height and tablet arm.

Optional carts The Filo chair stacks 40 high in a single cart and 80 in a double stack cart while easily fitting through standard doors.

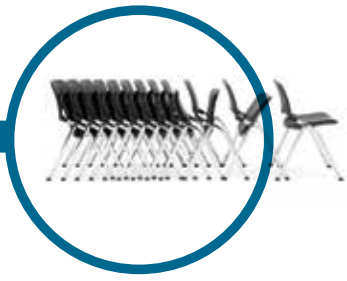


The Filo chair stacks 40 high with a cart and 20 high on the floor. Glides are standard with an optional felt pad for smooth surface applications.

- Lightweight • Stackable • Easily renewable



• Lightweight • Tough • Nestable • Stackable



kendo

The Kendo chair provides uncompromised design with superior function.

FLEXIBLE DESIGN allows for nesting and stacking.

AVAILABLE IN POLYPROPYLENE SEAT AND BACK or with an upholstered seat, with or without casters and with or without arms.

Stacks 20 high!



Kendo stacks up to 20 chairs with or without arms. You can chose from five shell colors. All chairs are available with glides or with casters and flip-up seat or fixed seat. The frame is available in chrome or black, metallic silver and white powder-coat.

TimberRidge

Durable, long-lasting wood seating.

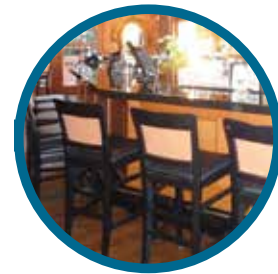
THE WINDSOR SERIES is suitable for public areas that require durable, long lasting seating.

THE WINDSOR CHAIR is available with or without arms, as a bench version and also available in a backless stool.

THE VENICE SERIES is a folding chair with a high end look.

THE YUKON SERIES is a wood dining chair that stacks with or without arms.

MANY ADDITIONAL styles to choose from.



• Chairs • Benches • Stools



Windsor Series



Yukon Series



Venice Series



ENCORE wood

Wood framed indoor seating with style and function.

BUILD YOUR OWN CHAIR by choosing your frame style, back style, seat option and colors.

STANDARD HEIGHT AND PUB HEIGHT available.



Many styles available

Spree

Plush pillow top allows for unsurpassed quality and comfort.

THE SPREE CHAIR FEATURES A 20" WIDE SEAT constructed with blow-molded plastic seat pan supporting up to 800 lbs.

THE GALAHAD AND PRINCESS CHAIRS feature fixed backs or optional Flex-back "all day comfort."



Spirit chair with optional Flex-back

- Premium quality
- Flex-back option
- Stackable
- 100% made in the USA



Flex-back option



Galahad chair



CHARIOT™

Mobile and fixed booths for flexible dining spaces.

palmerHAMILTON

Mobile and nestable!



THE NEED FOR DINING SPACES TO SERVE MULTIPLE ROLES requires dining furniture to be more mobile, flexible, easy to reconfigure and storeable.

THE CHARIOT® GO BENCH features a seat that folds up, and built in casters allow the whole bench to be wheeled away for easy reconfiguration or storage.

AVAILABLE IN FIBERGLASS OR UPHOLSTERED seat and back, or a combination of both.

THE AERO GO TABLE completes a booth set. The Aero Go Table features built-in casters, that when stationary is rigid and does not move. The casters are activated by picking up the end of the table allowing it to be easily moved.

U.S. PAT. NO. 9,370,265 B2 - Foldable Mobile Restaurant Booth

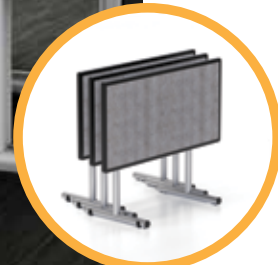
- Easily reconfigured
- Lift assist for easy open and fold
- Nestable
- Lightweight



fixed



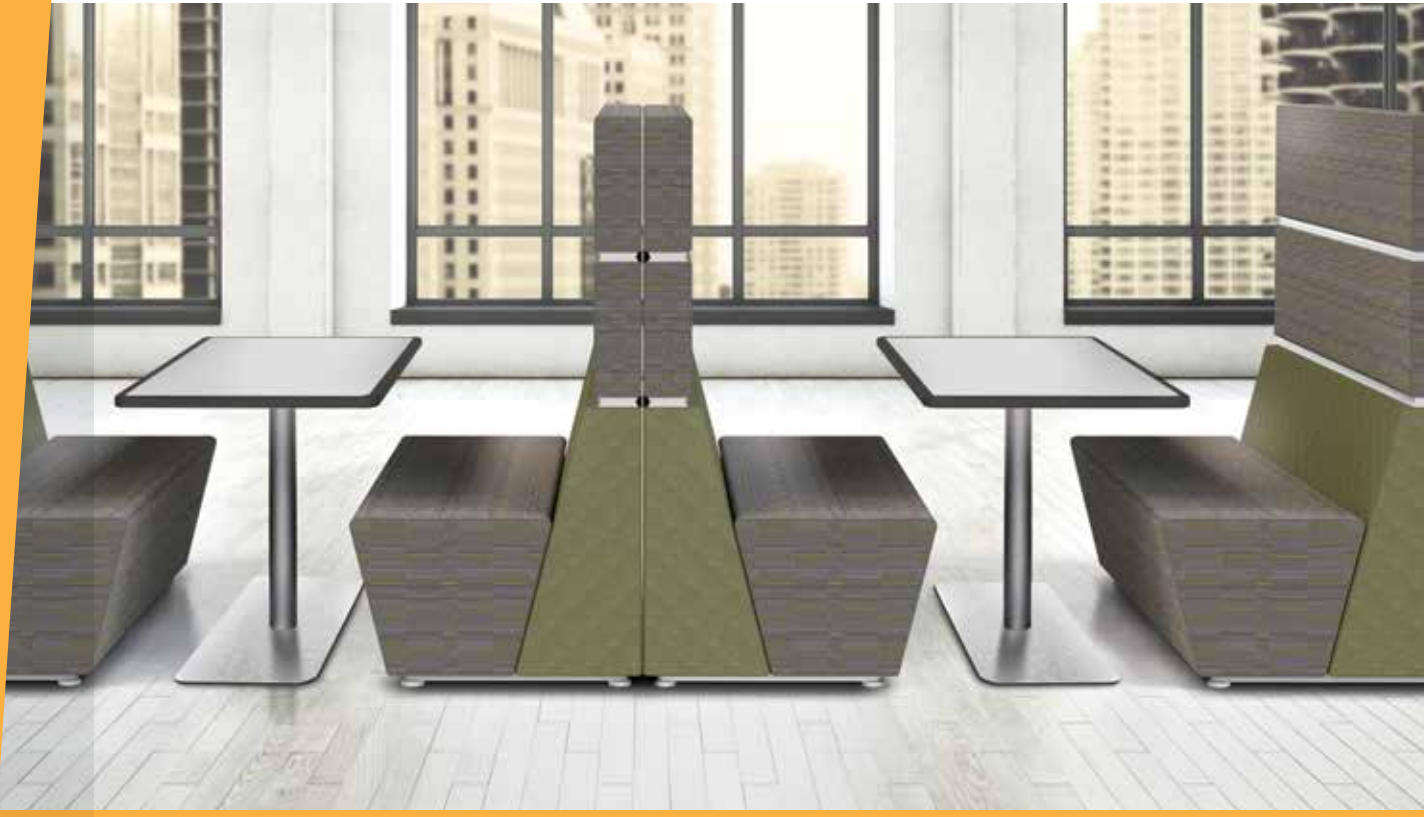
mobile



The contemporary styled Chariot Fixed Booth system features, a heavy-duty frame built to withstand the rigors of heavy use and a clean out gap between the seat and back for easy cleaning and maintenance. The Chariot Fixed version features an optional custom insert side panel.

- Easy to clean surfaces
- Heavy-duty frame
- Constructed of molded polystone fiberglass or fabric





• Unique styles and shapes • Build to adapt to your environment



• Modular • Endless possibilities



Power

Hive.

Create a unique dining environment.

HIVE MODULAR FURNITURE is designed to create flexible spaces for dining, collaboration, communication and concentration.

A VERSATILE SYSTEM TO CONFIGURE upholstered booth and banquette systems in many ways; legs or no legs, one, two or three screens for privacy.

DESIGN, LAYOUT AND UPHOLSTERY options to flow with your space.





palmer HAMILTON

Hive.

Looking for an interactive learning environment?

COLLABORATIVE FURNITURE is a great way to allow for group study or tutoring.

IT CAN BE ARRANGED IN UNLIMITED configurations allowing for flexibility.

INTEGRATE POWER OPTIONS to keep those tablets and phones powered!



Great for collaborative learning!



Transforming public places to productive spaces



HIVE lounge



- Modular, endless configurations
- USB/power
- Innovative connector system



Optional power available



lounge



Hive.

Hive Lounge facilitates bringing people together.

MEET, WORK and collaborate.

THE MODULAR SYSTEM ALLOWS you to configure, reconfigure and grow as you grow.

MEETING ALL OF YOUR SPACE, staff and visitors requirements.





Flexible, fun, mobile seating.

THE DAISY MOBILE "SHUTTLES" feature easy mobility and flexibility with standard casters.

AN OPTIONAL ATTACHED HANDLE allows for even easier portability.

YOU CAN CHOOSE FROM a center fixed or mobile center ottoman or a powered table.

- Mobile
- Leg option
- Tough
- Unlimited configurations



Combine with Hive to make a unique space!



ESSAY

Make your library stand out with Essay.

CHOOSING THE PROPER SHELVING IS IMPORTANT for function and organization. Based on the needs of your space, there are many choices.

SINGLE-SIDED, DOUBLE-SIDED with decorative center panel options, straight or curved shelving on various finishes.

MAKE THE ROOM STAND OUT with interchangeable art to label areas or just to add bright colors and design elements.



- Art/colored back panels
- Single, Double sided
- Various finishes



Hidden casters



The circulation desk is the center of your space, serving those working in the space and others that are there to enjoy the space. Be creative with art and colored back panels with many options to choose from. Desks have removable case front and wire management portals in each panel.



Be creative with art / colored back panels



TIKi

Outdoor dining chair/table with style and function.

THE TIKI CHAIRS FEATURE an aluminum frame with "Dura Wood" composite seat and back slats.

BOTH ARM AND ARMLESS chairs and stools stack for easy storage.

COMPOSITE SEATS AND BACKS are available in grey/teak, black, teak and espresso and are designed to withstand the harshest of conditions.



Chairs are stackable

• Tough and lightweight • Stackable • Composite seat and back • European Design



TIKi OUTDOOR DINING TABLE with style that is tough, yet lightweight.

FEATURING AN ALUMINUM FRAME with "Dura Wood" composite top slats.

Covey

Expand your dining space outdoors.

EXPAND YOUR DINING SPACE OUTDOORS with tops and frames that are extremely durable, stain and UV resistant for long lasting color and durability.

GREAT FOR INDOOR USE in food courts with laminate table tops. Customize your space with logos or graphics.

AVAILABLE IN STANDARD AND PUB HEIGHT in various seating arrangements.

TOP OPTIONS available in laminate, fiberglass, Corian® and composite.



- Outdoor grade powdercoat frames
- Custom logos or graphics
- Wheelchair-accessible options

Pub height option



*Edges stay sealed,
preventing peeling
and chipping.*



EdgeGuard™

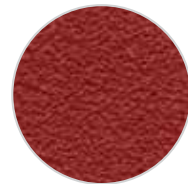
EDGE GUARD IS A SPRAYED ON POLYUREA EDGE treatment that provides superior resistance to moisture, eliminates unsanitary food traps, and is extremely tamper resistant. Edges stay sealed, preventing peeling and chipping. Durable for many years of use.

Standard Color:

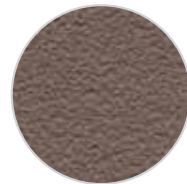


Black (1)

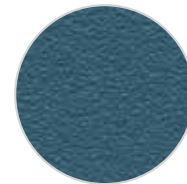
Additional Color Options:



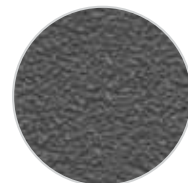
Red Brick (4)



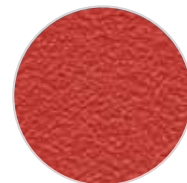
Desert Sand (5)



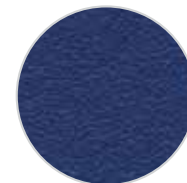
Country Blue (6)



Slate (7)



Red (9)



Violet Blue (10)

Note: Optional colors shown are available for an additional upcharge, per color, per order.
Note: Due to limitations in the printing process, actual edge colors may appear slightly different. Please request sample for exact color.

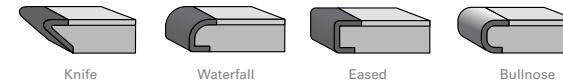


SMARTedge

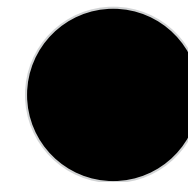
SMARTEDGE IS A "GORILLA TOUGH" URETHANE EDGE that is not only rugged but 65% of the material consists of renewable bio-based resource. SMARTedge is a design favorite for its contemporary styling and its ergonomic comfort:

- SMARTedge has antimicrobial additives which include antibacterial and antifungal properties to ward off possible infectious germs.
- The SMARTedge urethane creates a liquid tight seal to the laminate and substrate.
- Custom color matching available to match your specific need.
- UV stabilizers in material for protecting against color fade and break-down.
- Custom colors are available with a minimal custom color charge.
- Edges are available in Knife, Waterfall, Eased and Bullnose profiles.

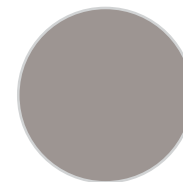
Edge profiles:



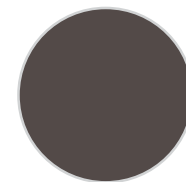
Standard SMARTedge Colors:



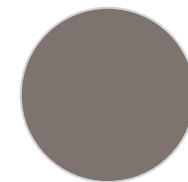
Black (1)



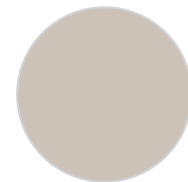
Light Gray (2)



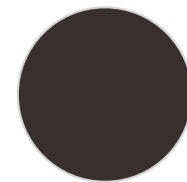
Slate (7)



Innertone (12)



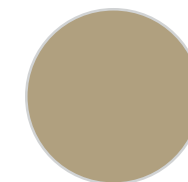
Innertone Light (13)



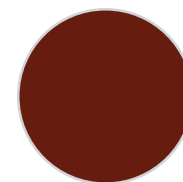
Swiss Brown (18)

Non-Standard SMARTedge Colors:

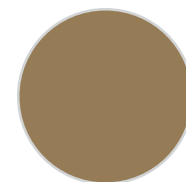
- Extended lead times may apply.
- Upcharge per color, per order.



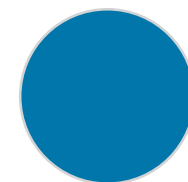
Tan (3)



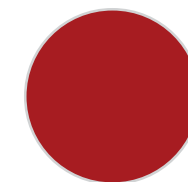
Red Brick (4)



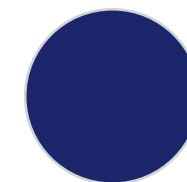
Desert Sand (5)



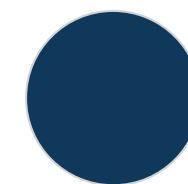
Country Blue (6)



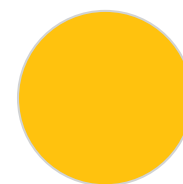
Red (9)



Violet Blue (10)



Imperial Blue (19)



Tuscan Sun (24)

Note: Due to limitations in the printing process, actual edge colors may appear slightly different. Please request sample for exact color.

Custom Logo Laminates

PALMER HAMILTON IS ONE OF THE LARGEST PRODUCERS OF CUSTOM LOGO LAMINATE TABLES and offers customized graphic design on any of our tables, waste and recycling receptacles and cabinets with no minimum quantity requirements. Colorful designs bring your dining space or breakroom to life, enticing students and employees to stay for lunch.

- Customized graphics including school mascot and colors, promote school pride. Graphics enhance the dining environment and are the most popular tables among students. Company logos promote your brand.
- Cost effective with no set-up charge or minimum quantity requirements. Customize any Palmer Hamilton product! Make a few units stand out or fill your space with color!



PHabLAB

Empowering Educators, Engaging Students

Fab Labs/Makerspaces

A FAB LAB OR MAKERSPACE IS A PLACE FOR INNOVATION, INVENTION, COLLABORATION AND LEARNING using a variety of technical tools and materials through digital fabrication. Students learn to be creative and turn an idea into a reality and use in the real world. Whether called Fab Labs, STEAM Labs, Hackerspaces, or Makerspaces, these "Project-Based Learning" labs are popping up in educational institutions all around the globe. A Fab Lab is not just for tech courses; all STEAM classes use the spaces to enhance their curriculum. To learn more please visit us at PHab-LAB.com

training • curriculum • support • community



our partners:



LAMINATES

FAB LABS

After

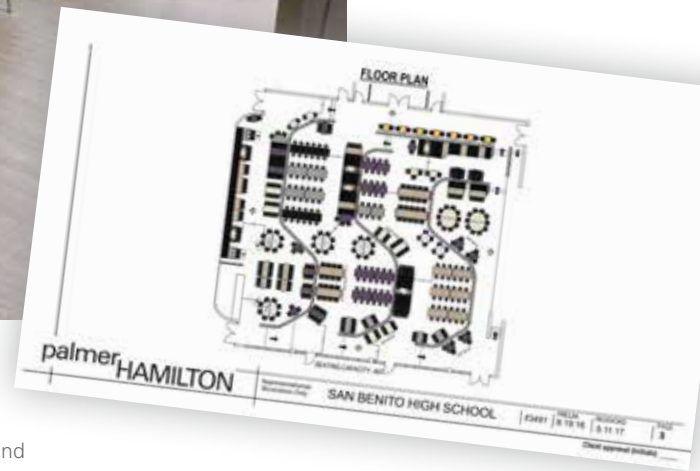


San Benito High School



Render in design book

Layout in design book



After



Layout in design book



Render in design book



Alabaster High School

TRANSFORM AND CREATE INVITING SPACES for dining and collaboration with PH Design.

PH Design can turn your vision into a reality. We provide the preplanning, layout, design, manufacturing and installation of your space. In turn, you see the results.

- School Branding
- Increased Participation
- Increased Revenue

THE EDUCATIONAL DINING FACILITY has become more than just a place to eat. It is a social area where people come to eat, talk, read and collaborate.



Library/ Collaboration Spaces

LIBRARIES/MEDIA CENTERS are more than just a place to read or check out books. It is a social gathering place for teens, tutoring, study groups, meetings and activities for children.

The PH Design team can plan your space to create a fun and exciting environment and still have flexible furniture to accommodate the needs for various functions.



Makerspace

CREATE, COLLABORATE AND DISCOVER IN THE MAKERSPACE. Integrate furniture and technology for hands-on learning activities. Easily reconfigure your space to fit your function.



Southern
University
at New Orleans



PHDesign hospitality



Hospitality

PROVIDE THE DINING AND MEETING PLACE experience that everyone is talking about.

Breakrooms

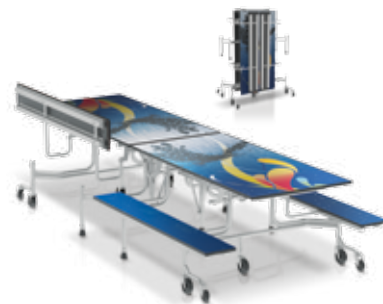
CREATE AN INFORMAL, RELAXING ENVIRONMENT IN YOUR BREAKROOM. This is where people come together for small informal meetings, to collaborate, socialize and eat.



Bench 19F



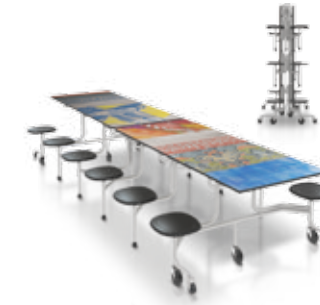
Bench 63T



Bench 61T



Bench 59TV



Stool 60T



Stool 59TV



Stool 59T



Shaped 59T



Convertible 32/33M



Convertible 34/35M



Flip 10T



Folding 22M/MT



23 M/MT



Wall Pockets



Waste/Recycling



Inspiration Table



Method Chair



Tool Cart



Condiment Cabinets



Buddy Bench

Palmer Hamilton

LEADING THE WAY IN FURNISHING SOLUTIONS

Palmer Hamilton provides innovative design and furnishing solutions to K-12, higher education, commercial markets, libraries, fab labs and makerspaces.

OUR CORE VALUES:

- Customer Solution Driven with a CAN-DO Attitude
- Dynamic Innovation Through Quality and Design
- High Value Integrity/Associates/Partners
- Future Focused

	Folding	Nesting	Casters	Glides	Power	Lightweight	Attached Seating	Coffee Table Height	Standard Height	Counter Height	Pub Height	Custom Logos	In Table Storage
Tables													
Rally™			●	●	●		●				●	●	
Reload™			●	●	●			●			●	●	
Reload Train		●	●	●	●			●			●	●	
Story			●	●	●		●	●	●		●	●	
Discovery			●					●			●	●	●
Aero	●	●	●	●	●	●		●			●	●	
Sync		●				●		●			●	●	
Philip™	●	●	●			●		●			●	●	
Alloy				●				●			●	●	
Conversation					●			●			●	●	
Inspiration			●					●		●	●	●	
Synergy			●	●				●	●	●	●	●	

	Folding	Casters	Stacking	Nesting	Arms	No Arms	Lightweight	Standard Height	Counter Height	Pub Height	Fixed	Polypropylene	Upholstered Seat	Wood Seat	Fiberglass Seat	Custom Logo
Seating																
Kurpie			●		●	●	●	●		●						●
Encore			●			●	●	●		●	●		●	●	●	
Filo			●		●	●	●	●	●	●		●				
Kendo	●	●	●	●	●	●	●	●				●	●			
TimberRidge	●		●		●	●		●		●		●	●	●		
Spree			●				●					●				

	Casters	Folding	Legs	Nesting	Upholstered	Fiberglass	Power
Booths							
Chariot	●	●		●	●	●	●
Hive			●		●	●	●

	Casters	Legs	Glides	Upholstered	Power	Tablet
Collaborative						
Hive	●	●	●	●	●	●
Hive Lounge	●	●	●	●	●	●
Daisy	●	●	●	●	●	●

	Casters	Single Sided	Double Sided	Power
Shelving/Circulation				
Essay Shelving	●	●	●	
Essay Circulation Desk				●

	Stacking	Lightweight	Attached Seating	Anchors	"Dura Wood"	Fiberglass
Indoor/Outdoor						
Tiki Chair	●	●			●	
Tiki Table		●			●	
Covey			●	●		●

Associations and Purchasing Groups:



palmer HAMILTON

143 S. Jackson Street
Elkhorn, WI 53121-1911

Toll Free: 800-788-1028
Local: 262-723-8200
Fax: 262-723-5180

www.PalmerHamilton.com

Visit our website to see the complete family of PalmerHamilton products.