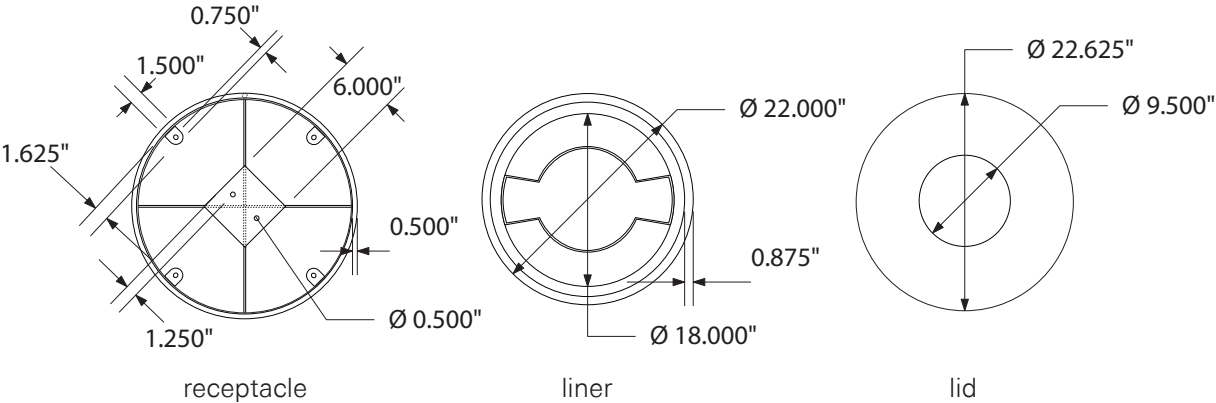


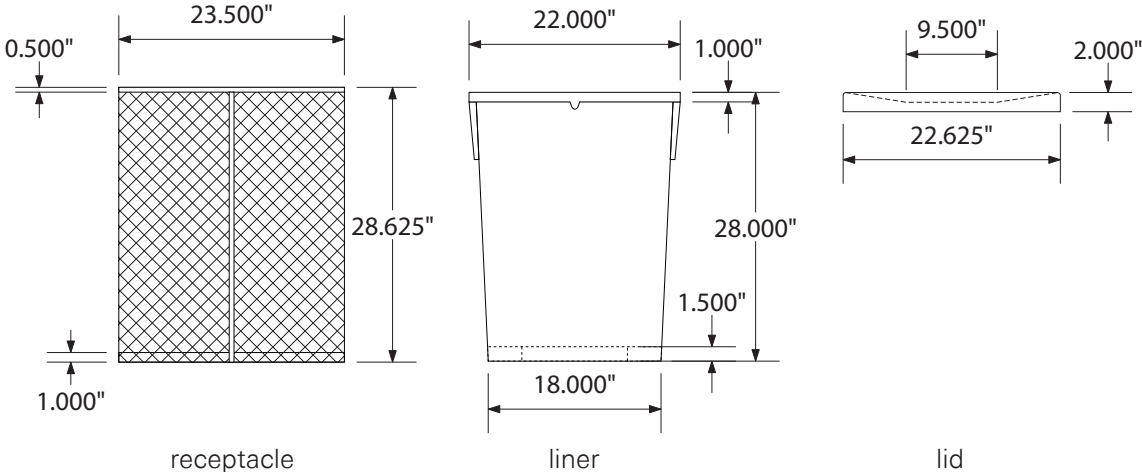
SPEC SHEET OF-32EXP
32 GAL. EXPANDED RECEPTACLE



top view



front view



product finish



Coated Surfaces

- Thermoplastic coated
- Copolymer-based, environmentally safe
- Does not fade, crack, peel, or warp
- Applied at a thickness 25-30 mils
- 5 year warranty on coating



Construction

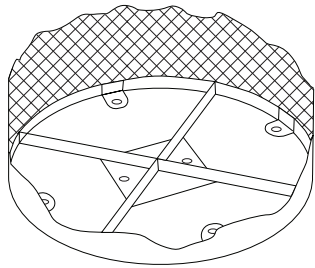
- Receptacle - 9 gauge steel expanded metal with 1/2" mild steel rod for rim/seam
- Liner - black polyethylene-plastic
- Lid - 11 gauge steel with thermoplastic coating

mounting styles

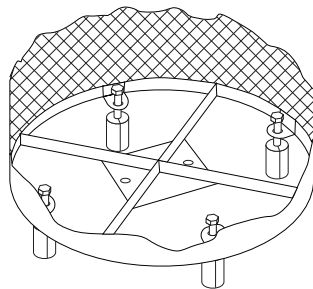
P = Portable: no mount

SM = Surface Mount: concrete anchors through tabs welded to rims [1], or at 6" center plate to B100 above ground mount [2]

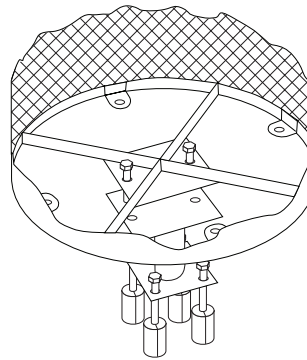
IG= In-Ground: bolts attach at 6" center plate to B200 receptacle mount imbedded in concrete



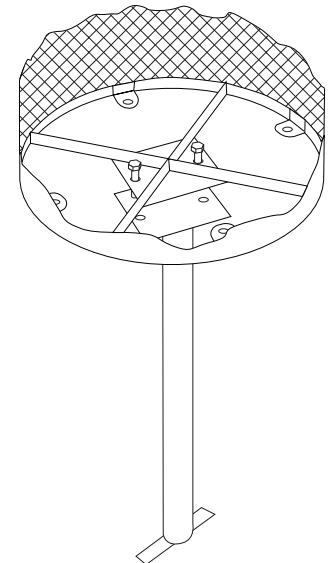
Portable



Surface Mount [1]
[anchors]



Surface Mount [2]
[B-100 6" mount]



In-Ground
[B-200 mount]

All design specifics subject to change. For all products Palmer Hamilton reserves the right to make adjustments due to changing market conditions, product discontinuation, legislative requirements or other circumstances.

Visit our website to see the complete family of Palmer Hamilton products
800-788-1028 | www.palmerhamilton.com

OF-32EXP Spec 0124

