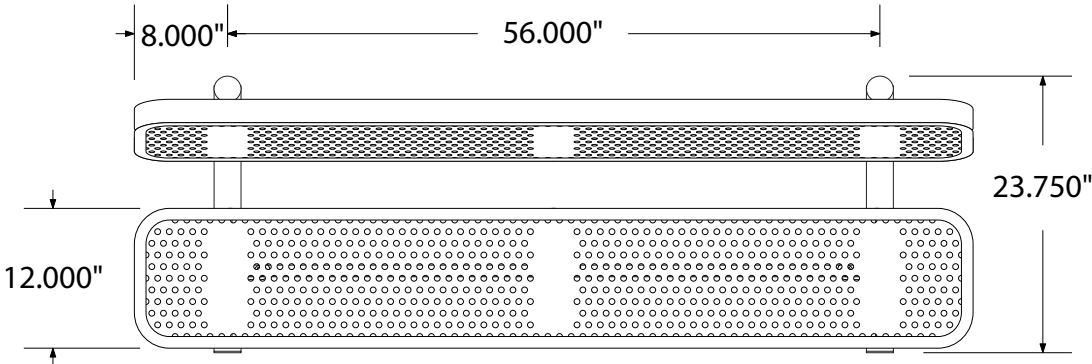


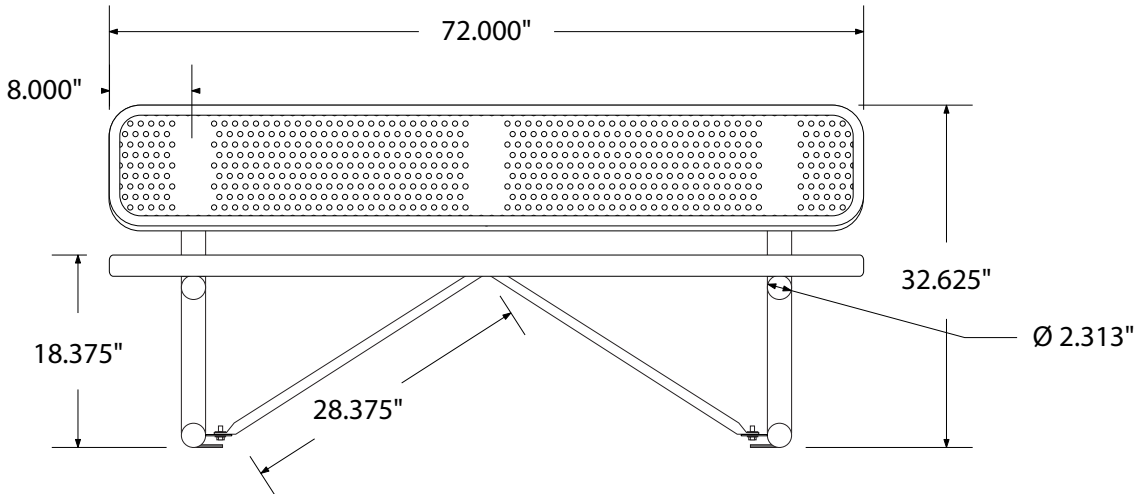
SPEC SHEET OF-B6WB-PERF
6' STANDARD PERFORATED METAL BENCH WITH BACK



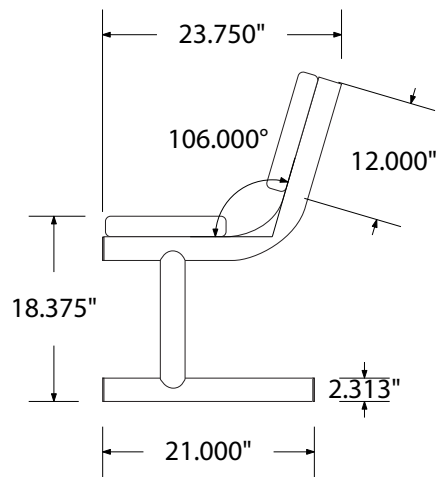
top view



front view



side view



product finish



Coated Surfaces

- Thermoplastic coated Copolymer-based, environmentally safe
- Does not fade, crack, peel, or warp
- Applied at a thickness 25-30 mils
- 5 year warranty on coating



Construction

- Seat and back - 9 gauge steel
- Tubular understructure of galvanized steel finished in black polyester powder coating
- Galvanized hardware

Weight

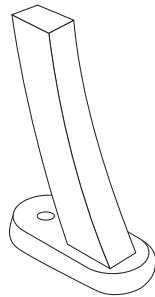
- 160 lbs

mounting styles

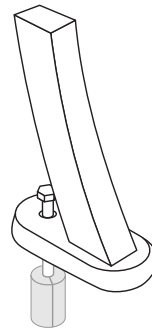
P = Portable: no mount

SM = Surface Mount: concrete anchors through holes in feet

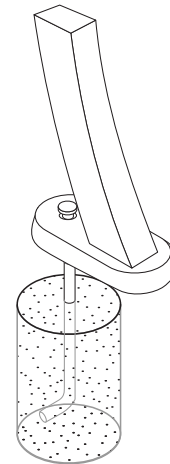
IG = In-Ground: J-rods set in concrete through holes in feet



portable



surface mount



in-ground

All design specifics subject to change. For all products Palmer Hamilton reserves the right to make adjustments due to changing market conditions, product discontinuation, legislative requirements or other circumstances.

Visit our website to see the complete family of Palmer Hamilton products
800-788-1028 | www.palmerhamilton.com

70951

OF-B6WB-PERF Spec 0724

