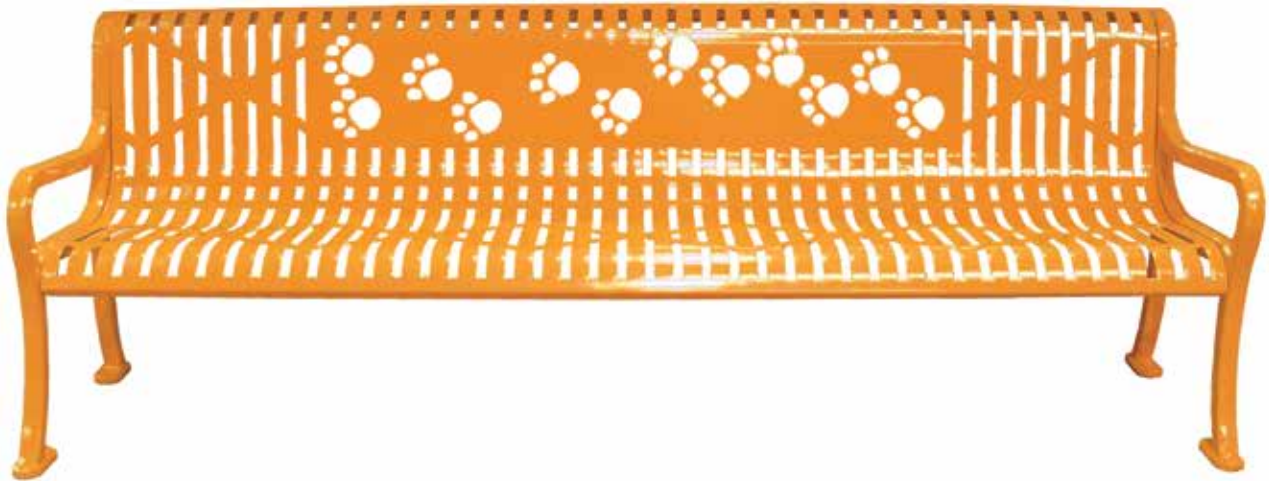
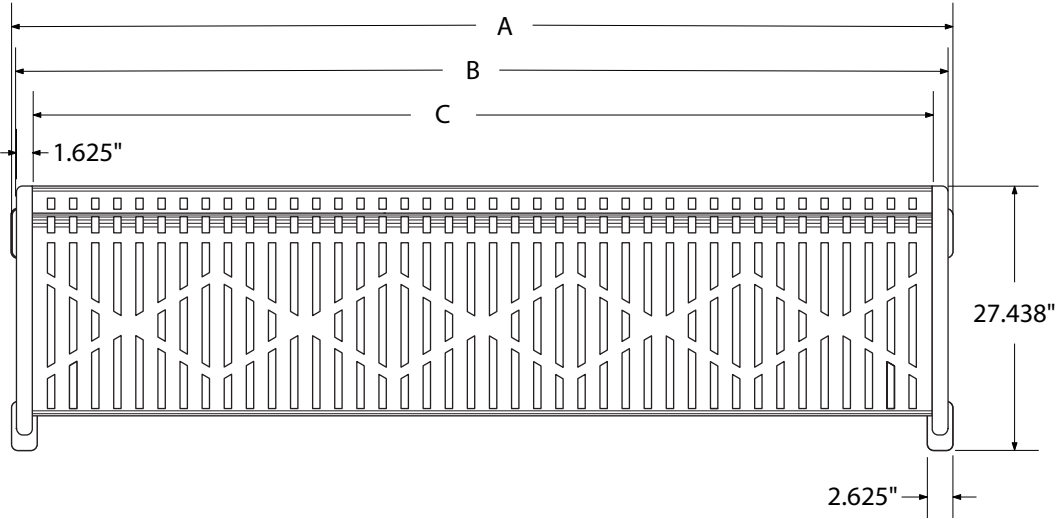


OF-RFP SPECIFICATIONS
8', 6', 5', 4' PERSONALIZED DIAMOND BENCH

See our **Metal Furniture Personalization Guide** for information on artwork and fonts

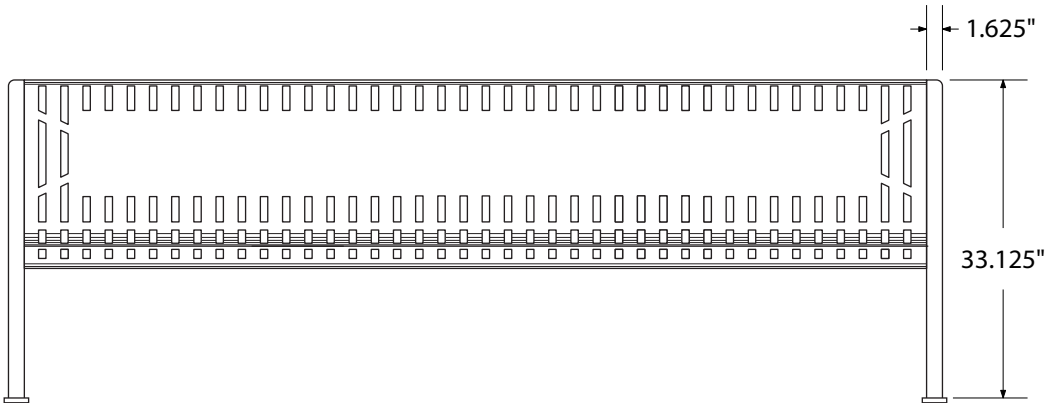


top view



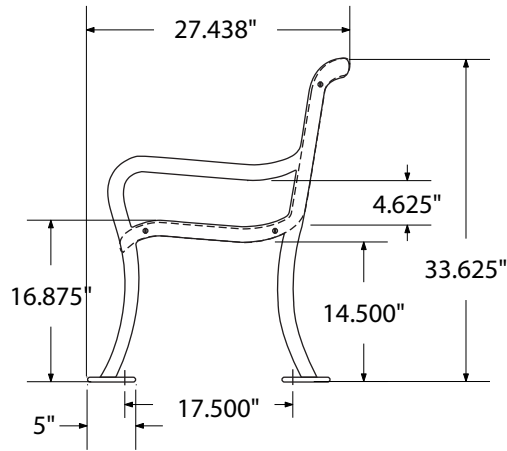
- 8' BENCH**
A = 98.250"
B = 97.250"
C = 94.000"
- 6' BENCH**
A = 74.250"
B = 73.250"
C = 70.000"
- 5' BENCH**
A = 62.250"
B = 61.250"
C = 58.000"
- 4' BENCH**
A = 50.250"
B = 49.250"
C = 46.000"

front view



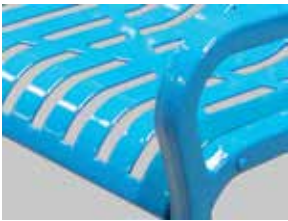
Same for all widths

side view



Same for all widths

product finish



Coated Surfaces

- Thermoplastic coated
- Copolymer-based, environmentally safe
- Does not fade, crack, peel, or warp
- Applied at a thickness 25-30 mils
- 5 year warranty on coating

Construction

- Seat and back - 11 gauge steel
- Cast iron leg structures
- Galvanized hardware

Weights

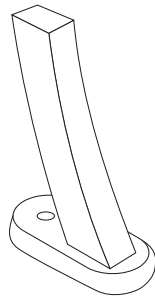
- 8 Foot Bench = 336 lbs.
- 6 Foot Bench = 293 lbs.
- 5 Foot Bench = 266 lbs.
- 4 Foot Bench = 225 lbs.

mounting styles

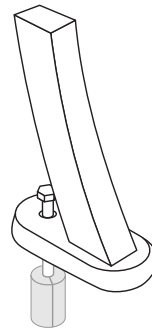
P = Portable: no mount

SM = Surface Mount: concrete anchors through holes in feet

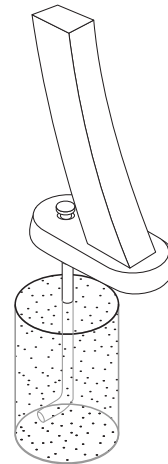
IG = In-Ground: J-rods set in concrete through holes in feet



portable



surface mount



in-ground

All design specifics subject to change. For all products Palmer Hamilton reserves the right to make adjustments due to changing market conditions, product discontinuation, legislative requirements or other circumstances.

Visit our website to see the complete family of Palmer Hamilton products
800-788-1028 | www.palmerhamilton.com

70924

OF-RFP Personalized Benches spec 0524

