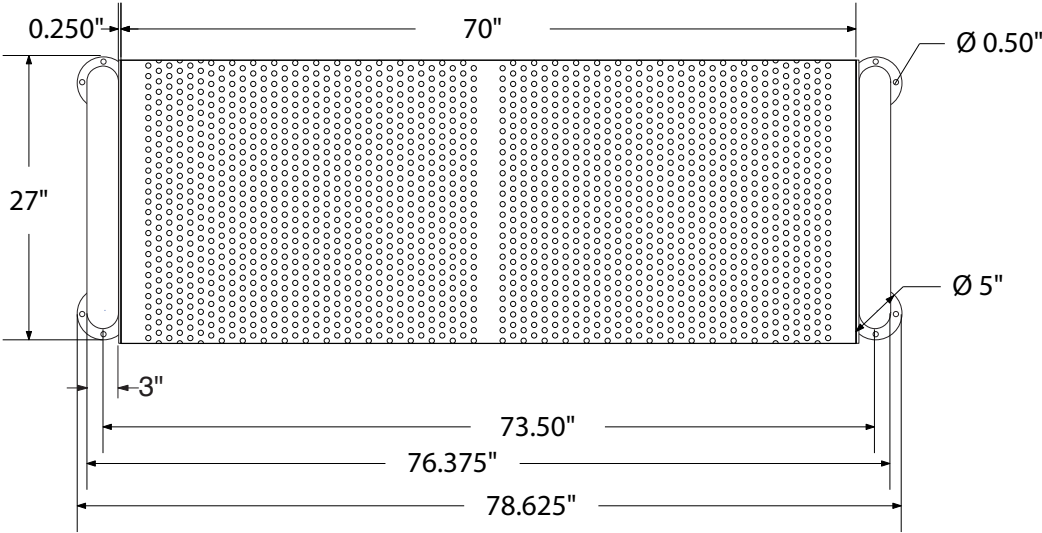


SPEC SHEET OF-RFNB6-PERF
6' U-LEG PERFORATED BENCH WITHOUT BACK

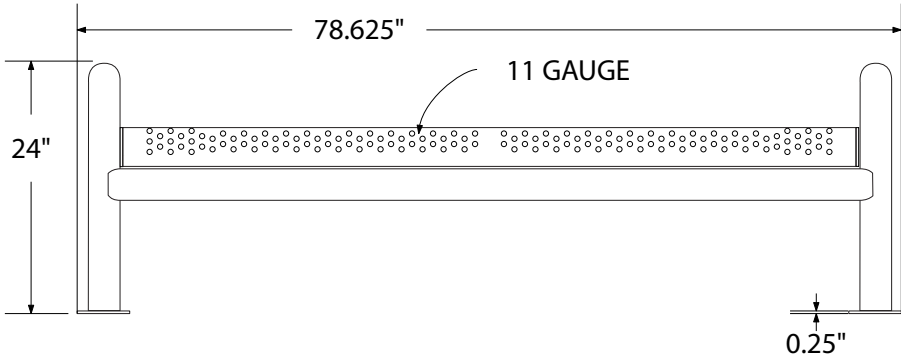
photo



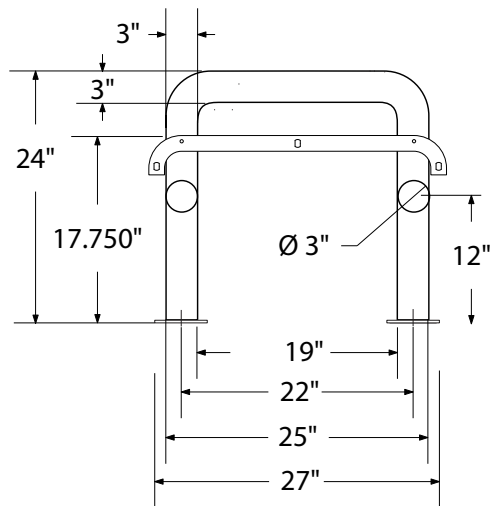
top view



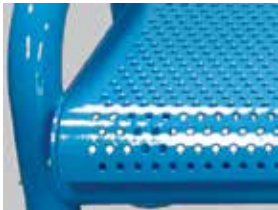
front view



side view



product finish



Coated Surfaces

- Thermoplastic coated
- Copolymer-based, environmentally safe
- Does not fade, crack, peel, or warp
- Applied at a thickness 25-30 mils
- 5 year warranty on coating

Construction

- 11-gauge perforated metal seat
- 3" 11-gauge steel tubular legs
- Galvanized hardware
- Pre-drilled mounting holes

Weight

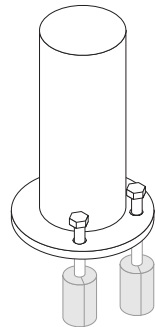
- 130 lbs

mounting styles

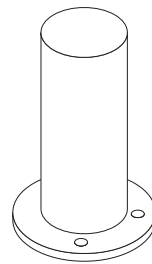
P = Portable: no mount

SM = Surface Mount:
concrete anchors through
holes in feet

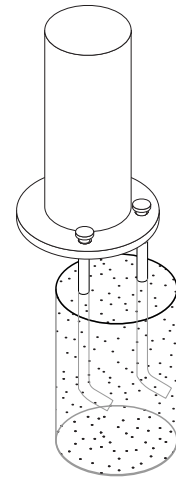
IG = In-Ground: J-rods set
in concrete through holes in
feet



portable



surface mount



in-ground

All design specifics subject to change. For all products Palmer Hamilton reserves the right to make adjustments due to changing market conditions, product discontinuation, legislative requirements or other circumstances.

Visit our website to see the complete family of Palmer Hamilton products
800-788-1028 | www.palmerhamilton.com

70954

OF-ULNB6-PERF spec_0824

